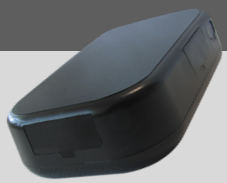


# TVX TraX

TVX TraX is miniaturized so it's discreet and an easy to hide device. Obtains real-time vehicle location and analyzes movements, driving conditions and habits thanks to its route simulation algorithm. It has a real time connection to the platform. Set routes, geofences, speed limits, receive real-time alerts and store positions even in areas where the connection is lost. Detect unauthorized stops in real-time, analyze and optimize your staff routes, set speed limits and receive real-time alerts. Organize your entire fleet concentrating relevant information for your units and drivers all under the same platform.





# TVX TraX

## Technical Specifications



### Connectivity

GNSS	Precision	Autonomous: <2.5m SBAS: 2.0m SBAS + PPP: <1m
	TTFF	Cold Start: <35s Warm Start: <30s Hot Start: <2.5s
	Sensitivity	Tracking mode: -165 dBm Buyback mode: -160 dBm Autonomous mode: -148dBm +25 dBic @zenith
	Antenna gain Constellations	GPS, GLONNAS Differential (SBAS, WASS, EGNOS, MSAS)
CELLULAR	Location	By antenna triangulation



### Hardware

CELLULAR	Operation frequency	850/900/1800/1900MHz @GSM, EGSM 900 MHz, DCS 1800 MHz, PCS 1900 MHz. 800/850/900/1900/2100MHz UMTS
	Output energy	Class 3 (24dBm +1/-3dB) for UMTS bands Class E2 (27dBm±3dB) for GSM850 & EGSM900 Class E2 (26dBm±3dB) for DCS1800 & PCS1900 Class 4 (33dBm ±2dB) for GSM 850/900 Class 1 (30dBm ±2dB) for GSM 1800/1900
	Communication class	-96 dBm
	Sensitivity	-96 dBm
	SMS	MT/MO PDU/Text Mode
	Antenna Gain	Gain +1 dBi
Bluetooth	Version	BLE 5.0
	Output energy	+4 dBm
	Antenna Gain	+1 dBi
	Digital expansion interface	Multiplexed digital interface to support up to 256 simultaneously connected attachments
USB	USB Type	USB -C



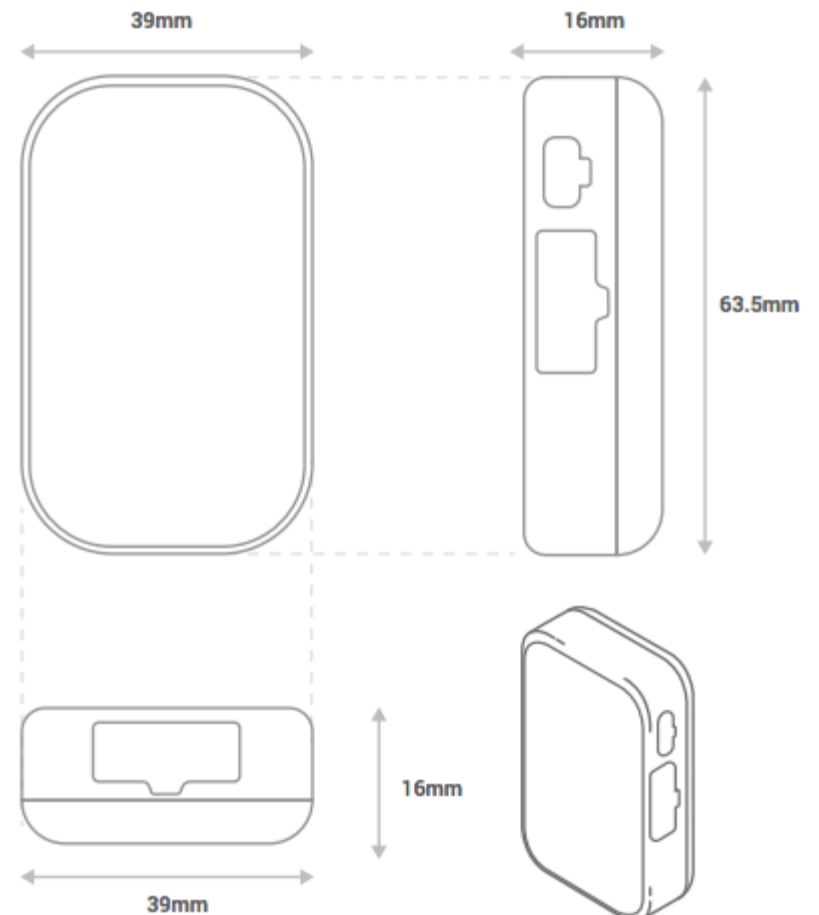
### Power

Battery	900mAh, 3.7 V lithium polymer battery. Stand by time (Motionless): 50 hours. Tracking time in continuous motion: 16 hours. Tracking time in mixed use: 24 hours. Charging time: 3 hours.
Charging voltage	5v

### Physical and Durability Specs

Dimensions	63.5mm x 39mm x 16mm(L x W x H)
Weight	80 g
IP rating	IP54
Internal	Memory Sensors

2 GB Internal storage  
3-axis digital accelerometer



This device has been optimized to run the following application: Evidence

All rights reserved 2021.

MKT. All images are illustrative. Contact your Authorized Distributor for more information. Technical Information may change without prior notice

